

Undergraduate Student Parents with Disabilities

This summary profiles undergraduate college students with dependent children across the United States who were enrolled in the 2019–20 academic year and identified as having a disability.



18%
of undergraduates
with disabilities
are parents
627,000

Dependent Children

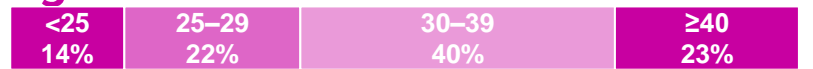
- 46%** of student parents with disabilities have one child
- 54%** have two or more children
- 50%** have at least one child under age 6

Gender



59% of nonparenting students with disabilities are female, 38% are male, and 4% have another gender identity

Age



77% of nonparenting students with disabilities are under age 25, 12% are 25–29, 7% are 30–39, and 4% are 40 or older

Race and Ethnicity



49% of nonparenting students with disabilities are white, 23% are Latine, 10% are Black, 2% are American Indian or Alaska Native (AIAN) or Native Hawaiian or other Pacific Islander (NHPI), 6% are Asian, and 10% are multiple races or ethnicities

Enrollment



75% of nonparenting students with disabilities are enrolled full time and 25% are enrolled part time

Institutions



45% of nonparenting students with disabilities are enrolled in a community or technical college, 33% in a public baccalaureate institution, 16% in a private nonprofit, and 6% in a private for-profit institution

Social

Married: 39%

5% of nonparenting students with disabilities are married

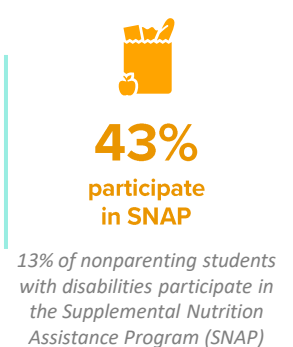
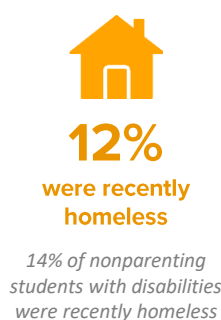
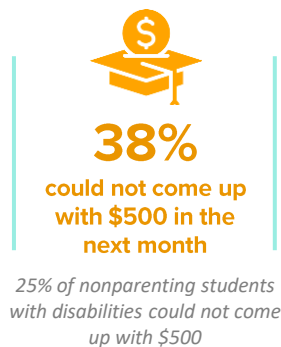
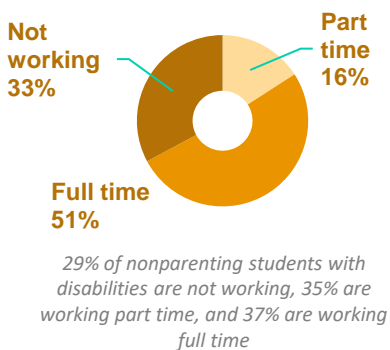
First-gen: 47%

28% of nonparenting students with disabilities are first-generation college students

Veteran: 14%

3% of nonparenting students with disabilities are veterans

Employment and Economic Well-Being While Enrolled



For more information and to pull similar statistics, explore the National Postsecondary Student Aid Study: 2020 Undergraduate Students in the National Center for Education Statistics' DataLab tool at <https://nces.ed.gov/datalab>.

Note: Data collection was interrupted by COVID-19 shutdowns, so parenting students might be underrepresented in this data source. Dependent children may be up to age 25. Enrollment intensity represents fall enrollment among those enrolled in the fall term. College types are recategorized using a detailed sector variable. Values may not sum to 100 because of rounding.

THERESA ANDERSON (URBAN INSTITUTE), SHERON GITTENS (STAR FELLOW), AND KATE WESTABY (URBAN INSTITUTE)
STUDENT-PARENT ACTION THROUGH RESEARCH KNOWLEDGE (SPARK) COLLABORATIVE | STUDENTPARENTACTION.ORG
SEPTEMBER 2024

